



# Sherpa Door Pockets for the '11-'18 JKU Wrangler Rear Doors

## *Installation Instructions*

The Sherpa Rear Door Pockets add convenient storage to the rear doors of your JKU Wrangler and eliminate the "saggy door pockets" problem with the factory net pockets.



### Tools required:

- T-25 Torx driver
- Drill and 1/16" drill bit

1. Using a T-25 Torx driver, remove the screw at the bottom front corner of the door trim panel.



3. Starting at the bottom corner where you removed the screw from the panel, pull the panel gently away from the door. The goal is to pull the lower half of the panel out far enough to release the pins that secure the panel to the door.



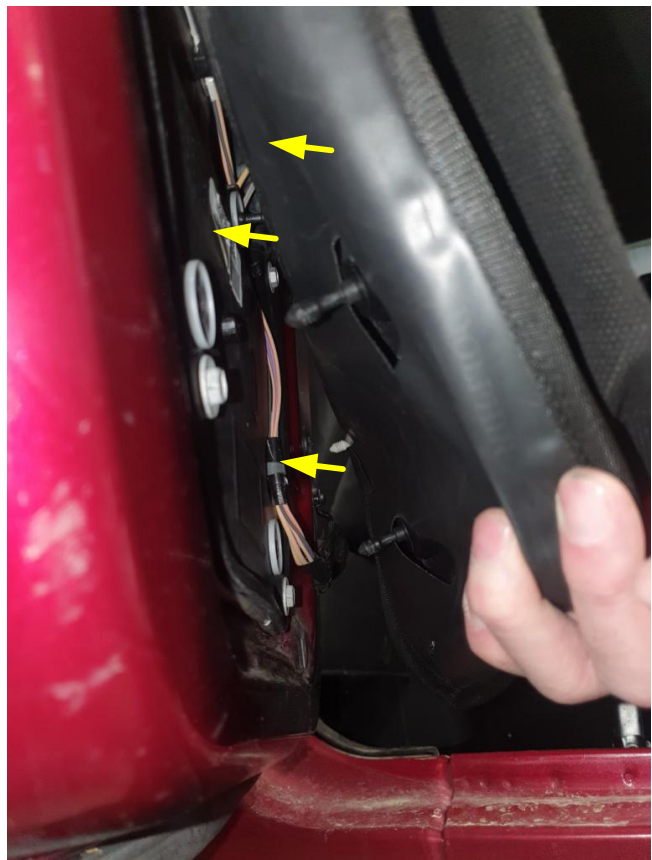
4. Slip the door pocket around the bottom of the door panel, making sure the door pins go through the holes in the back of the door pocket. You will need to reach behind the panel to guide the fabric over the pins so the pins go into the holes in the fabric. Once all the pins are through the holes, pull the panel up tight and push the door panel back in place, being careful that the pins go back in the appropriate holes. In the photo at right, the door panel is completely removed from the door for illustration purposes to show the push pins and the holes they go through. The door panel does not have to be removed, this photo is for illustration purposes only.



4. Pull the door pocket up tightly and using a 1/16" drill bit make a hole through one grommet at a time. Insert a screw through that grommet and tighten it into the hole you just drilled. Put screws in the other two grommets the same way.



5. Push the panel back in place, ensuring that the push pins go back in the matching sockets in the doors. It will help to look behind the panel as shown at right to guide the pins into the holes. Once the pins are in the holes, push firmly to snap them into place.



6. Replace the screw that you removed from the bottom corner of the door panel.